



**REGIONAL SPECIALISED METEOROLOGICAL CENTRE-TROPICAL CYCLONES, NEW DELHI
TROPICAL WEATHER OUTLOOK**

DEMS-RSMC TROPICAL CYCLONES NEW DELHI DATED 13.11.2024

TROPICAL WEATHER OUTLOOK FOR THE NORTH INDIAN OCEAN (THE BAY OF BENGAL AND THE ARABIAN SEA) VALID FOR THE NEXT 168 HOURS ISSUED AT 0600 UTC OF 13.11.2024 BASED ON 0300 UTC OF 13.11.2024.

BAY OF BENGAL:

Yesterday's low pressure area over southwest & adjoining westcentral Bay of Bengal off north Tamil Nadu & adjoining south Andhra Pradesh coasts has become less marked at 0300 UTC of today, the 13th November,2024. However, the associated upper air cyclonic circulation now lay over southwest Bay of Bengal off north Tamil Nadu and extended upto 0.9 km above mean sea level.

Scattered low and medium clouds with embedded intense to very intense convection lay over westcentral & south Bay of Bengal. Scattered low and medium clouds with embedded moderate to intense convection lay over rest Bay of Bengal & Andaman sea.

***PROBABILITY OF CYCLOGENESIS (FORMATION OF DEPRESSION) DURING NEXT 168 HRS:**

24 HOURS	24-48 HOURS	48-72 HOURS	72-96 HOURS	96-120 HOURS	120-144 HOURS	144-168 HOURS
NIL	NIL	NIL	NIL	NIL	NIL	NIL

***NOTE: EVERY 24HR FORECAST IS VALID UPTO 0300 UTC (0830 IST) OF NEXT DAY**

ARABIAN SEA:

Yesterday's upper air cyclonic circulation over southeast Arabian sea and adjoining Kerala coast now lay over southeast Arabian Sea off Kerala coast between 1.5 & 3.1 km above mean sea level at 0300 UTC of today, the 13th November,2024.

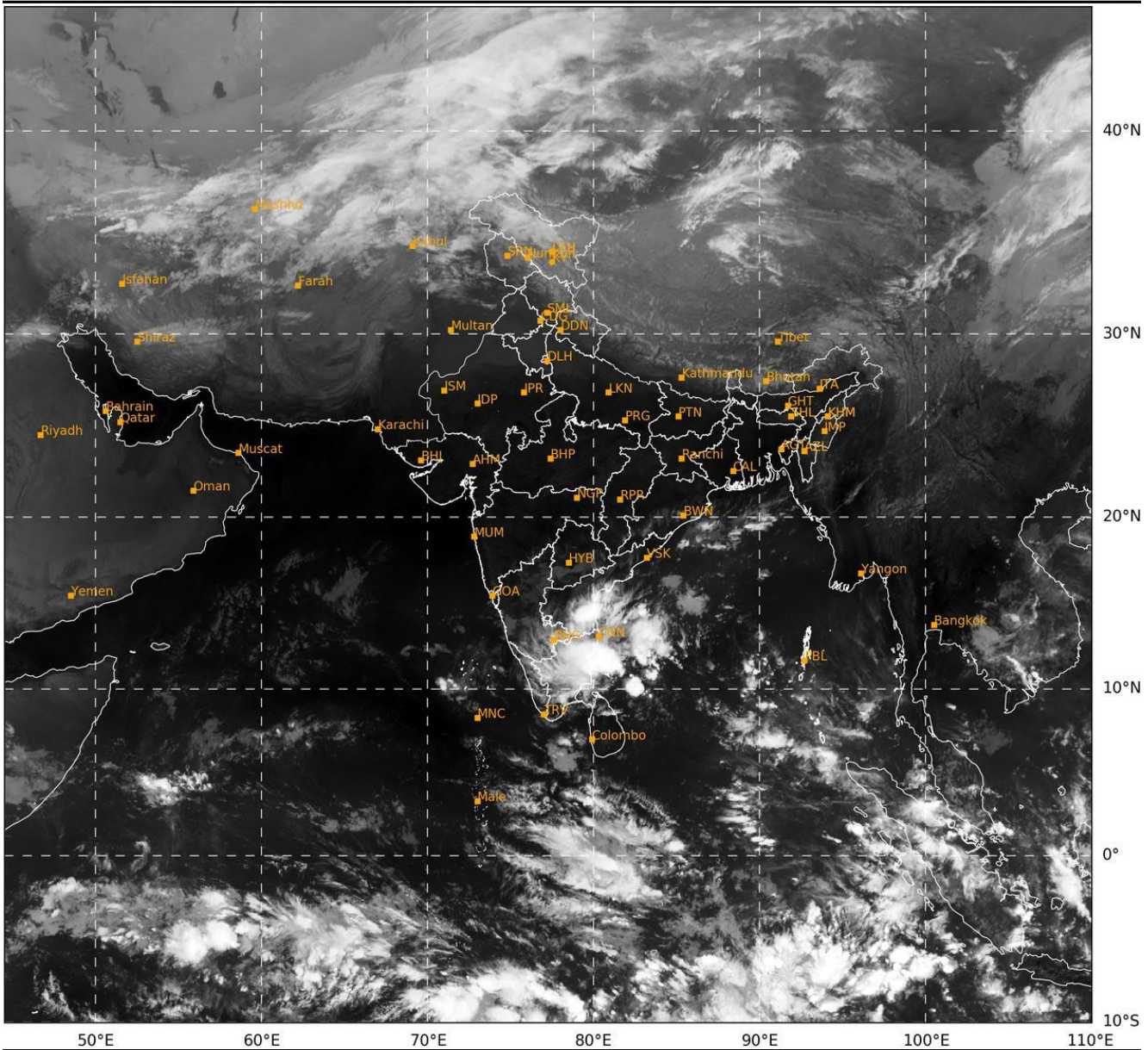
Scattered low and medium clouds with embedded isolated weak to moderate convection lay over south Arabian sea, Lakshadweep islands area & Comorin area.

***PROBABILITY OF CYCLOGENESIS (FORMATION OF DEPRESSION) DURING NEXT 168 HRS:**

24 HOURS	24-48 HOURS	48-72 HOURS	72-96 HOURS	96-120 HOURS	120-144 HOURS	144-168 HOURS
NIL	NIL	NIL	NIL	NIL	NIL	NIL

***NOTE: EVERY 24HR FORECAST IS VALID UPTO 0300 UTC (0830 IST) OF NEXT DAY**

REMARKS: NIL.



462

937

IMD,DELHI

Cloud distribution: (a) Isolated: <25%, Scattered:25-50%, Broken: 51-75%, Solid:>75%, Convection Intensity: (a) Weak: Cloud Top Temperature (CTT) >-25°C, (b) Moderate: CTT: - 25°C to -40°C, (c) Intense: CTT: - 41°C to -70°C and (d) Very Intense: : Less than -70°C
PROBABILITY OF CYCLOGENESIS (FORMATION OF DEPRESSION):NIL: 0%, LOW: 1-33%, , MODERATE: 34-66% AND HIGH: 67-100%
This is a guidance Bulletin for WMO/ESCAP Panel Member countries. Visit respective National websites for Country specific Bulletins